

A CLOSER LOOK AT...

Deviant

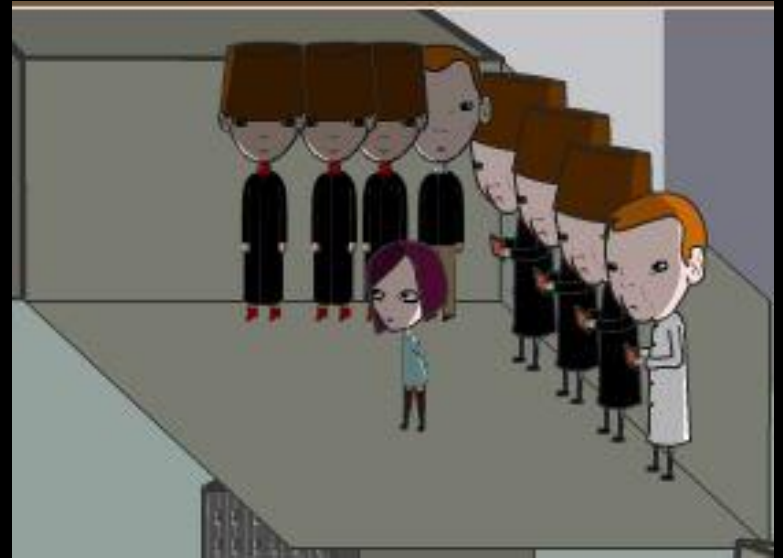
The Possession of Christian Shaw

Christine Kimsey

How is this electronic literature?

Deviant is electronic literature because of its...

- Interactive atmosphere
- Open to interpretation
- Fragmented storytelling

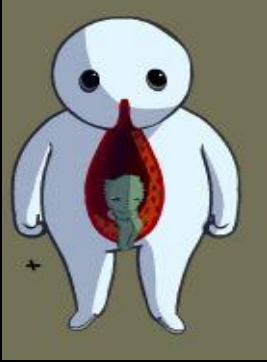


The Atmosphere

- Odd yet complimentary music
 - Solo violinist
 - looping track that uses beeps
- Disturbing imagery of Christian
 - Sunken eyes
 - Vomiting coal
 - People imprisoned and burned alive
- Strange encounters
 - Monsters
 - Tiny men
 - Cursed flora



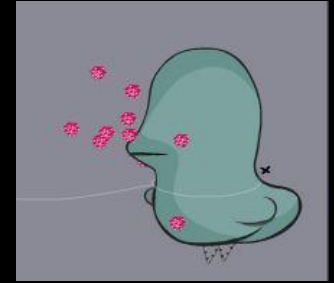
Interpretation



Glutton
and
parasite
or man
and wife?



Witch or
elderly
woman?



Possessive bird or
protective teacher?



Tiny men or
insects?

Real or Fake?

Hairy Alien or
new villager?

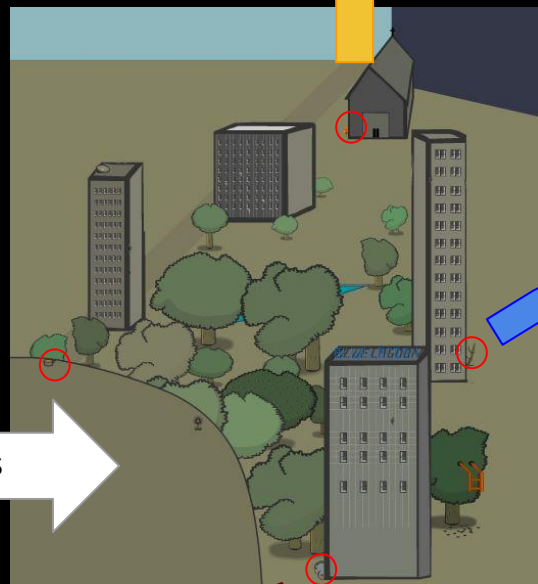


Fragmentary gameplay

Similar to Pry



Starting point



Choose from any of the POIs



Thank you!