



poppins
poppins
poppins
poppins

History

This typeface was designed using completely geometric forms, mainly circles. Inspired by european design from the 1920's, with smooth curves giving this font a completed look

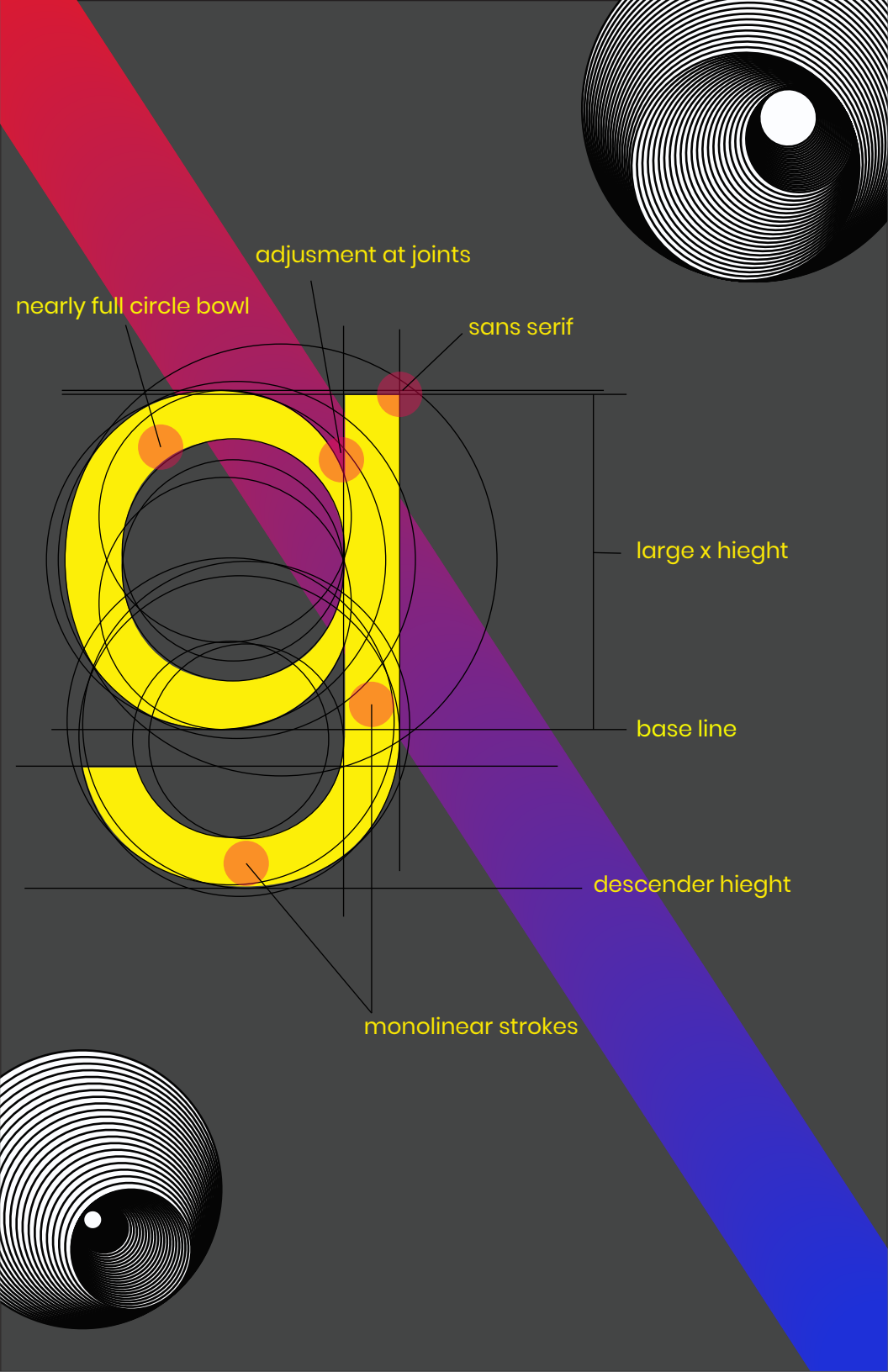
About poppins

The font Poppins is a sans serif type containing a wide array of styles. Starting from thin to light, regular, semibold, bold, extra-bold, and black. These also come with an italic counterpart. With a total of 14 different styles this typeface allows for usage in many different situations. The lack of serifs in this typeface helps create a minimalist, friendly appearance that also makes it ideal

systems. With poppins being one of the first typefaces to have a range of weights in this genre of devanagari. The devanagari was designed by Ninad Kale a graphic artist from India who focuses on design as a process. The latin forms are by Jonny Pinhorn a type designer from Great Britain that mainly creates non-latin types. Both are designers at ITF, an indian type foundry specializing in retail and custom digital fonts. This typeface was designed using completely geometric forms, mainly circles. Making this typeface a geometric sans. This is inspired by european design from the 1920's. With smooth perfectly round curves giving this font a completed look.

Using geometric shapes adds a clean, simple, and balanced feel to each letter. Although geometric typefaces have been a popular design technique, Poppins is the newest addition to this genre. This font uses lines of the same visual weight making them monolinear, with some alterations to strokes and where strokes join. These subtle changes allow for the appearance of evenness throughout the letter. This typeface has no issue with readability due to its large x-height in its Latin characters. The large x height aids in readability by opening up the counters of the letters to create a more legible letter form. With a large x height this font would fit well in a heading but not as well in big groups of text where a small x height font would work better. Poppins modern look and easy readability makes it a top choice for a minimalist approach to websites, headers, and product packaging.





nearly full circle bowl

adjustment at joints

sans serif

large x hieght

base line

descender hieght

monolinear strokes



modern design

for clean

web pages

or clean
web



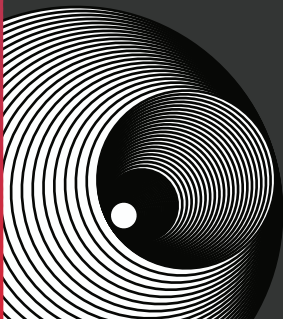
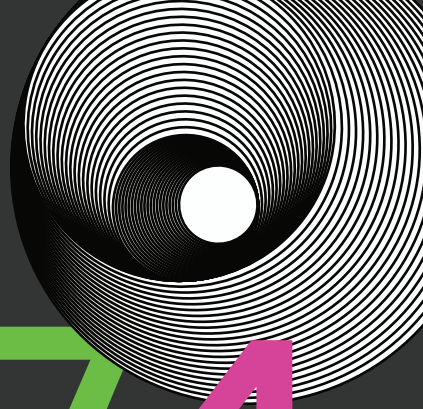
Large x-height

ideal

for headers

\$ % & @ ¥ / ? · £ ¢ = ∞ - !

1 3 7 4
2 5 6
9 8





Using geometric shapes adds a clean, simple, and balanced feel to each letter. Although geometric typefaces have been a popular design technique, poppins is the newest addition to this genre. This font uses lines of the same visual weight making them monolinear, with some alterations to strokes and where strokes join. These subtle changes allow for the appearance of evenness throughout the letter. This typeface has no issue with readability due to its large x-height in its latin characters. The large x height aids in readability by opening up the counters of the

Using geometric shapes adds a clean, simple, and balanced feel to each letter. Although geometric typefaces have been a popular design technique, poppins is the newest addition to this genre. This font uses lines of the same visual weight making them monolinear, with some alterations to strokes and

Using geometric shapes adds a clean, simple, and balanced feel to each letter. Although geometric typefaces have been a popular design technique, poppins is the newest addition to this genre. This font uses

Using geometric shapes adds a clean, simple, and balanced feel to each letter. Although geometric typefaces have been a popular

Using geometric shapes adds a clean,

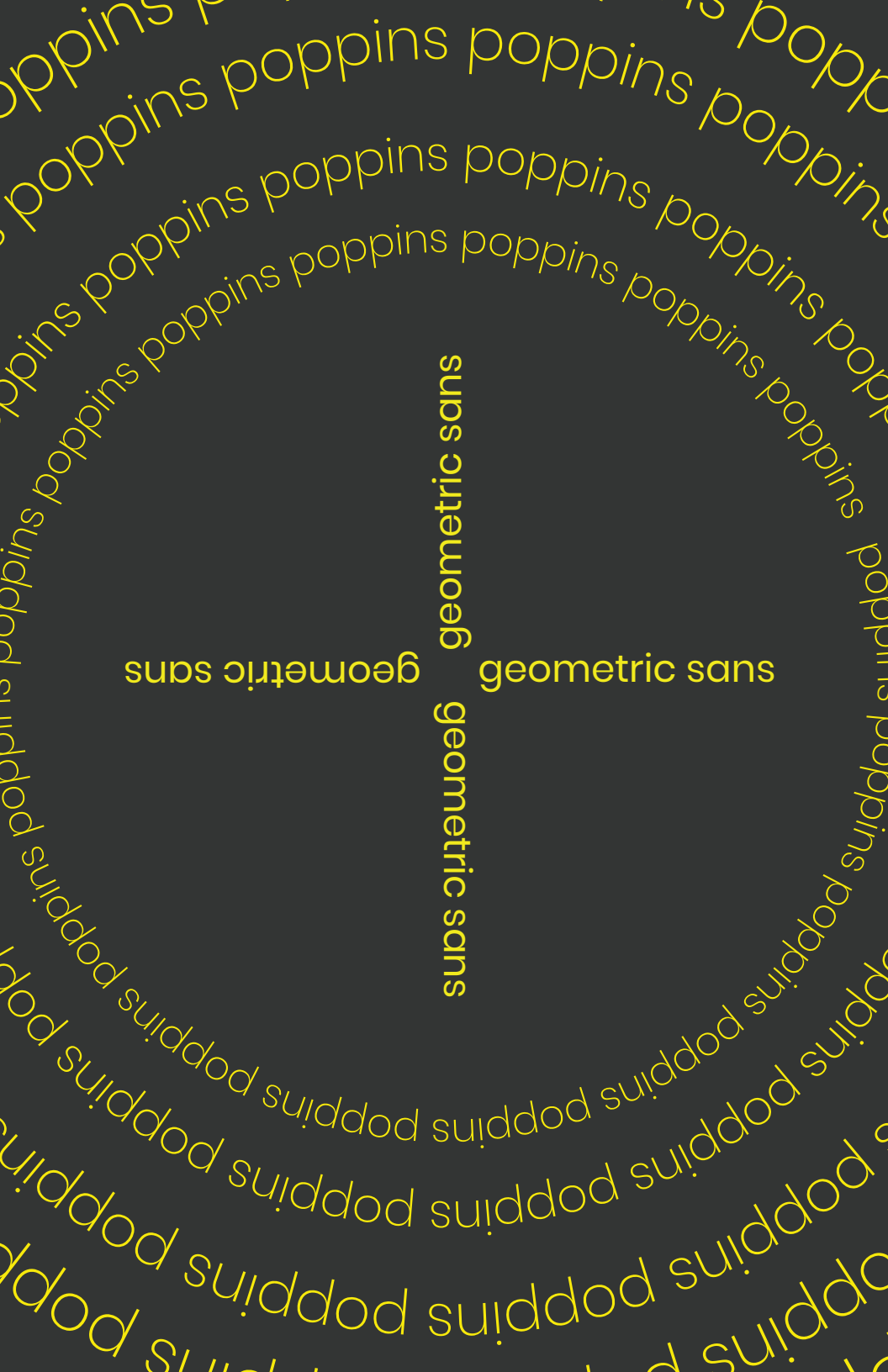
Using geometric shapes adds a clean,

Using geometric shapes adds a

Using geometric shapes

Using geometric shapes





geometric sans

geometric sans

geometric sans

geometric sans

thin

thin italic

extra light

extra light italic

regular

regular italic

medium

medium italic

semibold

semibold italic

bold

bold italic

extra bold

extra bold italic

black

black italic

Emigre mailing address

Emigre inc.

1700 Shattuck Ave., #307

Berkeley, CA 94709

USA



emigre.com